


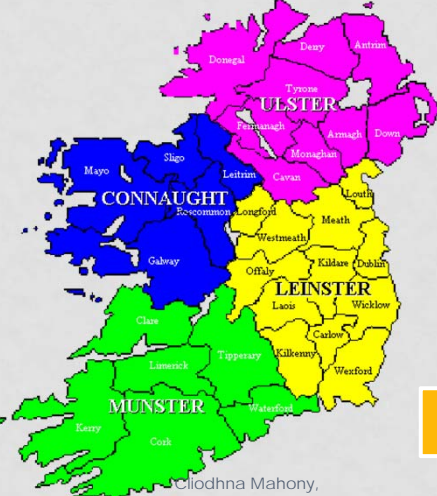
A TEEN GENDER ANALYSIS IN IRELAND (2008-2014)

SFP 12-16 YEARS
EUSPR CONFERENCE OCTOBER 2014

Clíodhna Mahony, Chair,
National SFP Council of Ireland
(Marie Lawless, Karol Kumpfer, PhD; Jing Xie, PhD; Keely Conn-Allen, PhD)



BUILDING A NATIONAL PICTURE



8 years (2007-present)

SFP 12-16**
SFP 6-11

National SFP Council of Ireland

Community Interagency Model

Utah Model – 14 weeks (dose effect)

Manual Adaptations

Clíodhna Mahony,
National SFP Council, October 2014

SFP TEENS: CHALLENGES REPORTED BY AGENCIES

Teen Boys

- Disruptive, challenging behaviour (particularly younger teens)
- Truancy /poor school attendance (transition periods)
- Higher diagnoses of ADHD /conduct disorders(v girls)
- Higher level & earlier presentation to agencies (v girls)
- One parent household (social welfare, public housing)
- Drug/alcohol use
- Low involvement in community
- Minor criminal offenses (anti-social behaviour)
- Learning difficulties.
- Lack of positive male role modelling

Teen Girls

- Early sexual activity / sexualised behaviour
- Parenting role – e.g. younger siblings.
- Mother – daughter relationship typically described as “friendship”
- Present to services later
- One parent household (social welfare, public housing).
- Older teen girls – drug/alcohol use.
- Some school difficulties.
- Social image – particularly older teen girls.
- Rebellious behaviour.

Clíodhna Mahony, National SFP
Council, October 2014

BALLYMUN TEEN ANALYSIS TOP 25 CHANGES (P.<.0001, 24 TEENS) 2012-2013

Increases In

- Having a family meeting
- Parent
 - talking with teens re thoughts & feelings
 - Letting teen know did a good job
 - Help with homework
 - Saying they are proud of teen
 - Spending time with teen
 - Affirmation / praise
- Teen:
 - Controlling anger
 - Doing good things
 - Praising others
 - Saying how they feel

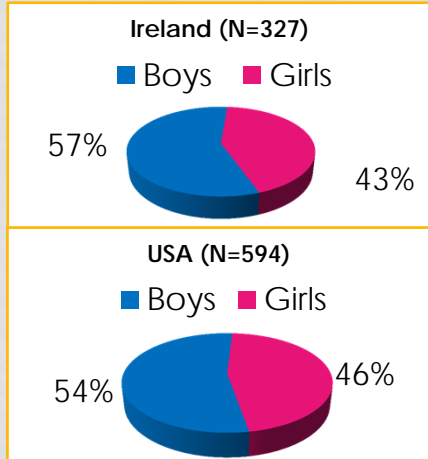
Decreases In

- Teen:
 - Temper tantrums
 - Lying to parents/teachers
 - Talking back
 - Not listening
 - Getting angry
 - Getting distracted easily
 - Fighting with parents
- Parent yelling or shouting
- Family:
 - Arguing about same things
 - Insults/yelling
 - Serious arguments
 - Fighting alot

Clíodhna Mahony, National SFP
Council, October 2014

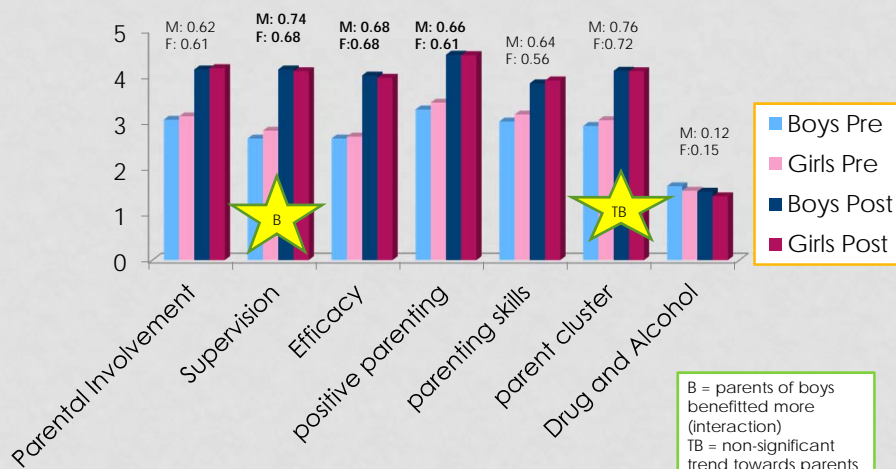
NATIONAL TEEN ANALYSIS METHODOLOGY

- Retrospective pre & post parent questionnaire
- Ireland data on 14 week, 12-16 years SFP :
 - 2008-2014
 - 25 sites across island of Ireland
- USA data on 14 week 12-16 years SFP:
 - 2008-2014
- 19 variables analysed using a 2x2 Anova quasi - experimental design
 - Including teen, parent and family.
- Results presented as P,T & F mean changes + Effect Sizes



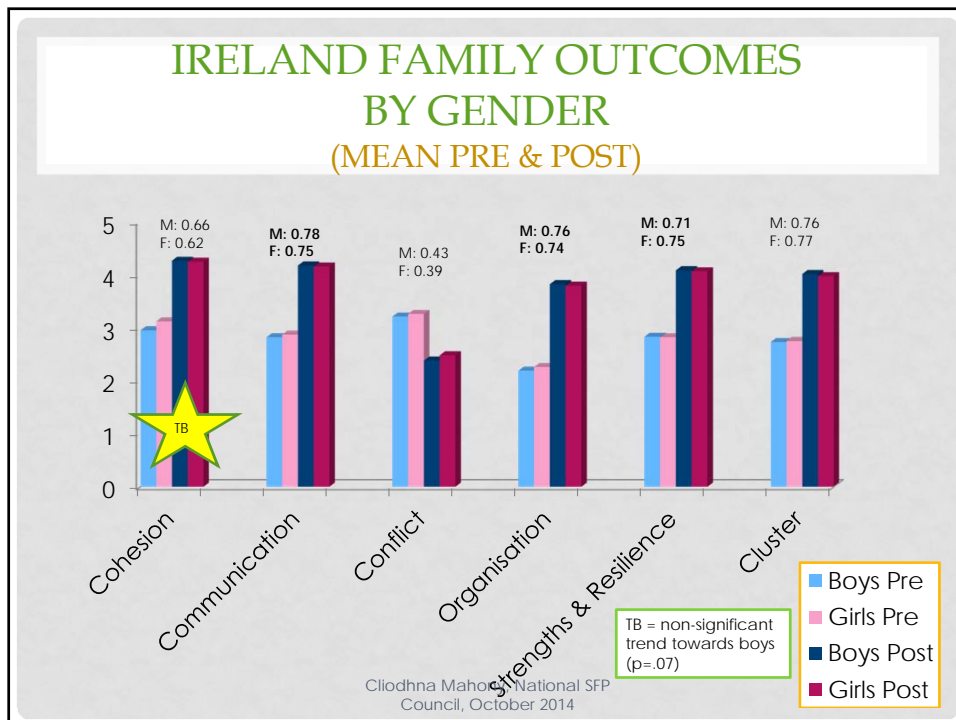
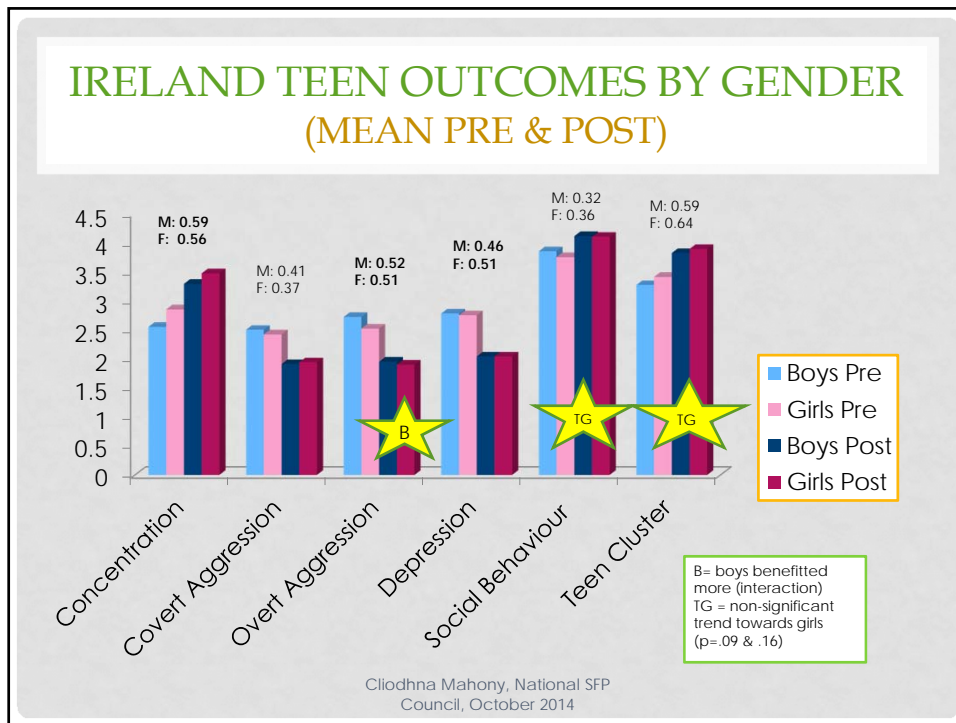
Clíodhna Mahony,
National SFP Council, October 2014

IRELAND PARENT OUTCOMES BY GENDER (MEAN PRE & POST)



B = parents of boys benefitted more (interaction)
TB = non-significant trend towards parents of boys benefitting more (p= .09)

Clíodhna Mahony, National SFP
Council, October 2014



IRELAND VS. USA CLUSTER RESULTS (EFFECT SIZES)

Ireland	Parent Cluster (d)	Teen Cluster (d)	Family Cluster (d)
Male	.76*	.59	.76
Female	.72	.64**	.77

*non significant trend boys (p=0.09)

**non-significant trend girls (p=.16)

USA	Parent Cluster (d)	Teen Cluster (d)	Family Cluster (d)
Male	.65	.49	.69
Female	.65	.49	.71

Clodhna Mahony, National SFP
Council, October 2014

IRELAND VS. USA

Ireland

- All 19 variables stat significant
- Interaction effects: **Parental Supervision & Overt Aggression** - boys benefitted more than girls.
- Parenting, Child and Family Cluster scales large effect sizes
- **Conflict** reduced more in families with boys
- **Drugs and Alcohol**: higher use at entry, more room for change

USA

- All 19 variables stat significant:
 - Except drug and alcohol in parents of girls(p=.07)
- **Adolescent boys and girls benefitted equally.**
 - No significant interaction effects
- Cluster scores lower than Ireland
- **Conflict** reduced more in families with girls
- **Drugs & Alcohol**: lower use at entry, less room for change

Clodhna Mahony, National SFP
Council, October 2014

PRACTICE & POLICY

- Programme is overall equally accessible to changes in both adolescent teen boys and girls, and parents of families of either. Statistically Significant changes, with overall moderate to large effect sizes.
- In practice
 - the level of risk & intake appears to be pitched correctly – range of risk and protective factors which are addressed by the programme.
 - Boys and girls are benefitting - implementation structures/delivery/support good.
- Policy:
 - National policy early intervention focus – this helps to support the case for working with teen boys and girls and their families to enhance Protective factors and decrease risk factors.
- Further Research: National Outcomes; age analysis; cost-benefit analysis; longitudinal data.

Clodhna Mahony, National SFP
Council, October 2014

GO RAIBH MAITH AGAIBH 😊

Contact details:

Clodhna Mahony
National SFP Council
C/O Ballymun Local Drugs & Alcohol Task Force
Axis Centre
Main Street
Ballymun
Dublin 9

+353 (0) 1 8832142
www.ballymunlocaldrugstaskforce.ie
clodhna@ballymundtf.ie

Clodhna Mahony, National SFP
Council, October 2014